



A few words about our walks

inmidtown's walks are led by **Aly Mir**, a professional guide and history graduate. Most walks start outside Holborn Underground station. They begin at 1pm and last for 45 minutes. There's no need to book, just turn up on the day (unless otherwise specified).

What people have said about our walks:

"Aly is the perfect guide. I always learn something new about the area and it really is the best way to spend a lunch hour"

Gill Booth, Competition Commission, October 2009

"Excellent - really good fun and informative"

David Simmons, Capita Symonds, October 2009

"Very interesting for bringing to life the history of the streets that I pass every day"

Angela Parsons, Genesis Oil & Gas, October 2009

"The walks are a lovely break from work. Aly is an excellent guide - very interesting and informative"

Georgina Goodman, The ETB, October 2009

"I've thoroughly enjoyed the walk... it's just hard deciding which walk to do next!"

Stephanie Higham, RBI, October 2009

And about the Museum Mile walk...

"Thank you for a memorable day visiting all 12 museums. I have returned to revisit them and shop, it was well organised and fascinating. Many thanks to the team"

Anita Oji, October 2009

There are more walks just around the corner...

Our next programme of walks for 2010 will cover October - December. Some of the walks from the current programme will be featured and there will be some new subjects to look out for, including a special walk for the Bloomsbury Festival, more walks about the origin of street names, and a new ghost walk.

By printing this map on Cocoon Silk 100% recycled paper the environmental impact was reduced by 529kg of landfill / 14,314 litres of water / 1,427kWh of electricity / 133kg CO₂ of greenhouse gases / 859kg of wood compared to a non recycled paper. Source: European BEF (Data on virgin fibre paper). Carbon footprint data audited by the CarbonNeutral Company.

Go your own way with one of our bespoke walks

As an additional exclusive service for businesses in the **inmidtown** Business Improvement District area we can offer bespoke walks designed around your own theme.

If you are planning a special event, a work day out, an office party, or someone's leaving do, then why not include a guided walk?

- We can design a walk taking you from your workplace to a chosen venue, pointing out places of interest en route. We can add in a quiz or even a pub stop!
- Discover the history of the road where your business is based, or simply choose any of the subjects from our leaflet and our guide will lead your own private walk, just for your employees, at a date and time to suit you.
- Or choose from our special walks that don't feature in the main schedule. Our guide will take you on your own private tour lasting just an hour.

I Want My Mummy! Visit highlights of the British Museum including the Egyptian exhibits.

Ghost Rider. Selected horrors taken from both our Haunted Holborn and More Spooky Stories walks.

inmidtown works in partnership with statutory providers to add value. The programmed and bespoke walks are supplied as part of **inmidtown's** cultural information programme aimed at making Holborn a better place to work, live and visit.

For the hearing impaired

If you are hearing-impaired, we can provide a short custom-written guide to the places we visit to increase your enjoyment. Just let us know 3 days before the walk you want to attend and our Guide will prepare one for you.

inmidtown
bloomsbury / holborn / st.giles

2nd Floor / Kingsbourne House / 229-231 High Holborn / London / WC1V 7DA /
020 7078 7077 / info@inmidtown.org / inmidtown.org

inmidtown
bloomsbury / holborn / st.giles

free
guided walks

JULY / AUGUST / SEPTEMBER 2010

- Wild in St. Giles
- Pink People
- A Taste of India
- Sounds of St. Giles



Thursday 1 July

Sale of the Century

Today's walk takes us on a visit to some of the shops around Holborn that are over 100 years old.

Friday 2 July

Pink People (new for 2010)

In the week of the Gay Pride march, today's walk visits the former homes of notable lesbian and gay people in Holborn.

Tuesday 6 and Wednesday 7 July

Sounds of St. Giles (new for 2010) 5.30pm start

We go to Tin Pan Alley and see places from Sixties music and the Punk era. This walk will last an hour and a half, starting at 5.30pm from outside Holborn Station, and ending back there before 7.00pm.

Friday 9 July

Holborn United (new for 2010)

The World Cup Final is on Sunday. To get ready for the big kick-off our walk visits sites in Holborn from the history of football.

Wednesday 14, Thursday 15 and Friday 16 July

Wild in St. Giles (new for 2010) 5.30pm start

Today we walk to the green oasis in the middle of the city that is Phoenix Garden. This walk will last an hour, starting at 5.30pm from outside Holborn Station, and ending at 6.30pm near Tottenham Court Road Station.

Tuesday 20 July

Sounds of St. Giles (new for 2010) 5.30pm start

We go to Tin Pan Alley and see places from Sixties music and the Punk era. This walk will last an hour and a half, starting at 5.30pm from outside Holborn Station, and ending back there before 7.00pm.

Wednesday 21 and Friday 23 July

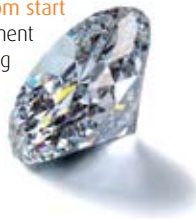
Fantastic Buildings (Part I)

Today we see two of the amazing buildings that illustrate the wide variety of architecture in Holborn. This tour will include a visit to the Renaissance Chancery Court Hotel and De Vere Venues, Holborn Bars in Waterhouse Square.

Tuesday 27 July

Diamonds are Forever (new for 2010) 5.30pm start

We go to Hatton Garden to explore its development from medieval vegetable garden to the sparkling centre of today's jewellery trade. This walk lasts an hour and a half, starting at 5.30pm from outside Holborn Station and ending before 7.00pm in Hatton Garden.



Wednesday 28 July

Pioneers of Policing - Bow Street Runners (Part I)

Today's walk visits locations near Holborn connected with the history of this early police force.

Friday 30 July

On the Trail of the Monster - Bow Street Runners (Part II)

Visiting sites in Holborn where the eighteenth century ripper, the 'London Monster', lurked and we hear about the Bow Street Runners attempts to catch him.

Tuesday 3 August

Sounds of St. Giles (new for 2010) 5.30pm start

We go to Tin Pan Alley and see places from Sixties music and the Punk era. This walk will last an hour and a half, starting at 5.30pm from outside Holborn Station, and ending back there before 7.00pm.

Wednesday 4 and Friday 6 August

Fantastic Buildings (Part II)

Today we visit another of the wonderful pieces of architecture in Holborn - the former Public Records Office which is now the Maughan Library. Today's walk includes a visit to the Western Room inside the building.

(No walks 7 - 17 August)

Wednesday 18 August

A Taste of India

To mark Indian Independence day we visit sights near Holborn associated with Indian history and culture.



Friday 20 August

Graphic Holborn

This walk visits sites in Holborn connected with the history of caricatures and maps.

Tuesday 24 and Wednesday 25 August

**Bloomsbury People (new for 2010)**

We visit the homes of some of Bloomsbury's famous former residents, including personalities from the worlds of science, music, philosophy and religion.

Friday 27 August

Walk will be from 10am until 5.15pm

FREE. 20 places only

Museum Mile full day walking tour

A walk along Museum Mile provides a fascinating insight into London, past and present. From Euston Road to the River Thames, discover 12 of the city's most extraordinary museums and galleries and their equally diverse collections. For a full list of museums visit www.museum-mile.org.uk. Bring your own lunch or buy it at one of the many cafes and restaurants in the area. **Booking is required**

To book, please call us on 020 7078 7077 or email info@inmidtown.org

Tuesday 31 August

Old St. Giles

Today we explore Old St. Giles. We visit the site of its notorious rookery and hear about the history of this area.

Wednesday 1 and Friday 3 September

Charles Dickens and Sketches by Boz (new for 2010) 5.30pm start

Sketches by Boz was Dickens' first novel. We visit several sites in Bloomsbury and St. Giles which featured in it. You don't need to have read the book beforehand because the stories will be explained. This walk will last about an hour and a quarter, starting at 5.30pm from outside Holborn Station and ending back there before 7.00pm.

Tuesday 7 September

Bloomsbury People (new for 2010)

We visit the homes of some of Bloomsbury's famous former residents, including personalities from the worlds of science, music, philosophy and religion.

Wednesday 8 and Friday 10 September

Knights Templar

This ancient order set up its first English base in Holborn before moving to the New Temple Church (as featured in The Da Vinci Code). We visit both sites on this tour.

Tuesday 14 September

Bloomsbury People (new for 2010)

We visit the homes of some of Bloomsbury's famous former residents, including personalities from the worlds of science, music, philosophy and religion.

Wednesday 15 and Friday 17 September

**Hendrix's Holborn**

This week marks the 40th anniversary of Jimi Hendrix's death at a tragically young age. To commemorate the event we visit three sites in the Holborn area from the short but fantastic career of this rock legend.

Tuesday 21 and Wednesday 22 September

Horrible Holborn

The pleasantness of present-day Holborn hides a dark and sinister past. This tour uncovers it.

Friday 24 September

Old St. Giles

Today we explore Old St. Giles. We visit the site of its notorious rookery and hear about the history of this area.

Tuesday 28 September

Holborn's Culture, Media and Sport

A mix of surprises - including major sites from the history of sport, music and cinema.

Wednesday 29 September

Bloomsbury People (new for 2010)

We visit the homes of some of Bloomsbury's famous former residents, including personalities from the worlds of science, music, philosophy and religion.